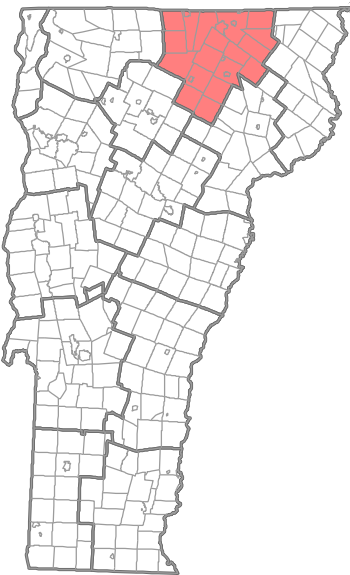
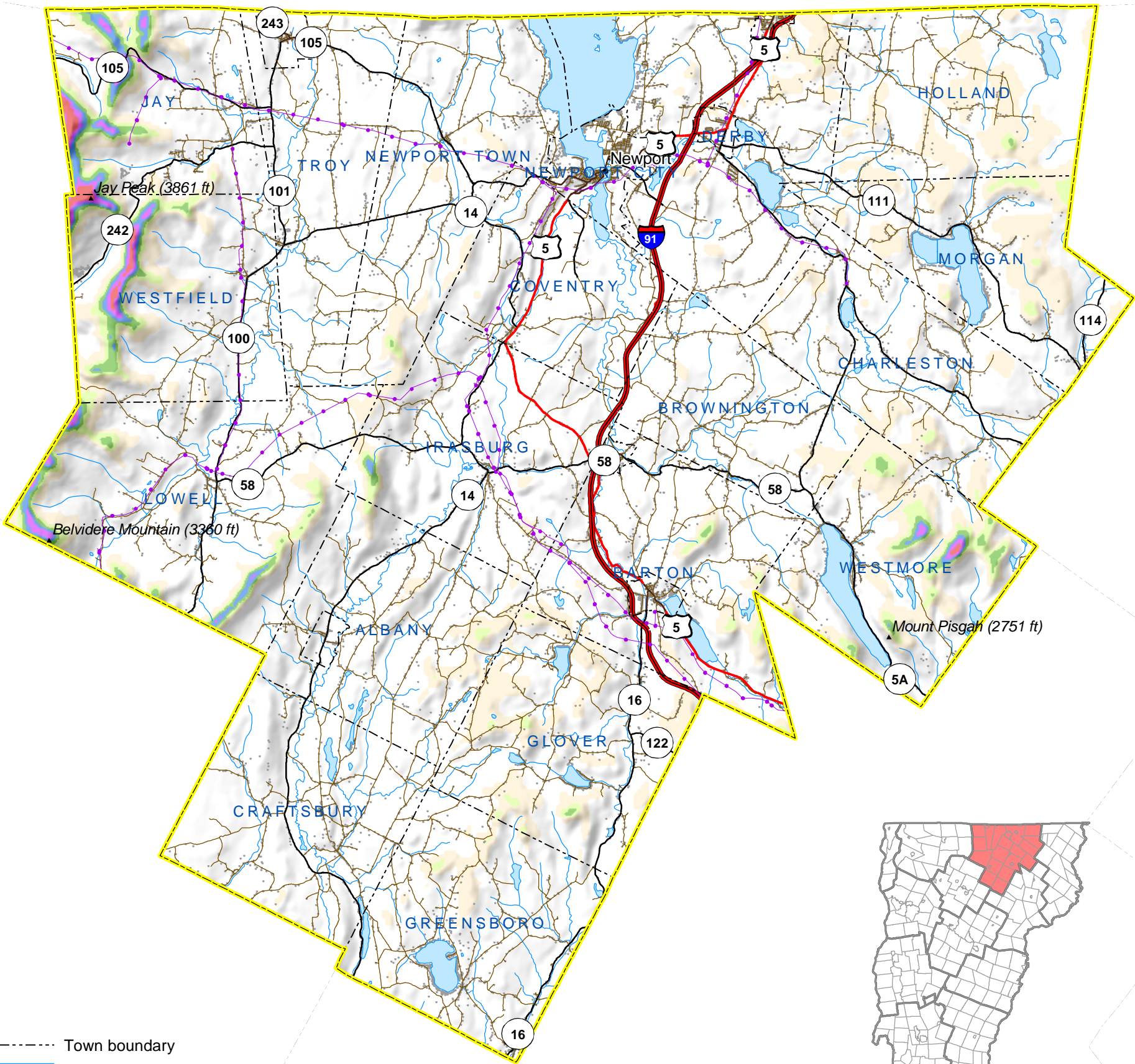


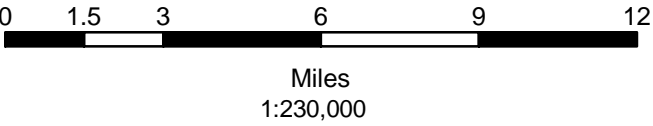
Orleans County, Vermont

30 meter Wind Resources



- Town boundary
- Surface water
- River or stream
- Residence
- Interstate highway
- US highway
- State highway
- Town road
- Transmission line < 230kV

Wind resource class	MPH	M/S
Class 1	0 - 11.4	0 - 5.1
Class 2	11.5 - 13.2	5.2 - 5.9
Class 3	13.3 - 14.5	6.0 - 6.5
Class 4	14.6 - 15.7	6.6 - 7.0
Class 5	15.8 - 16.6	7.1 - 7.4
Class 6	16.7 - 18.3	7.5 - 8.2
Class 7	18.4 - 24.6	8.3 - 11.0



Data:

Wind class data is estimated at 30 meters above ground cover and was reclassified from the Vermont Wind Resource Map produced by Truewind LLC. The remaining layers were downloaded and formatted from the Vermont Center for Geographic Information's website (<http://www.vcgi.org>).

Projection:

Vermont State Plane Meters (NAD83)

Prepared for the Vermont Department of Public Service
This map is part of a set of county-level maps produced for each of Vermont's 14 counties, estimating wind resources at 30- and 50-meter heights. Available online at <http://state.vt.us/psd/>

Copyright April 2004 Vermont Environmental Research Associates
Waterbury Center, Vermont 05677
(802) 244-7522
www.northeastwind.com
cartography: Evan Osler

